



# DRILLING LOG



FROM : (m) 1000 TO : (m) 2870 SCALE : 1/ 500

Well Name : BASKER 2

Company : ANZON

Country : AUSTRALIA

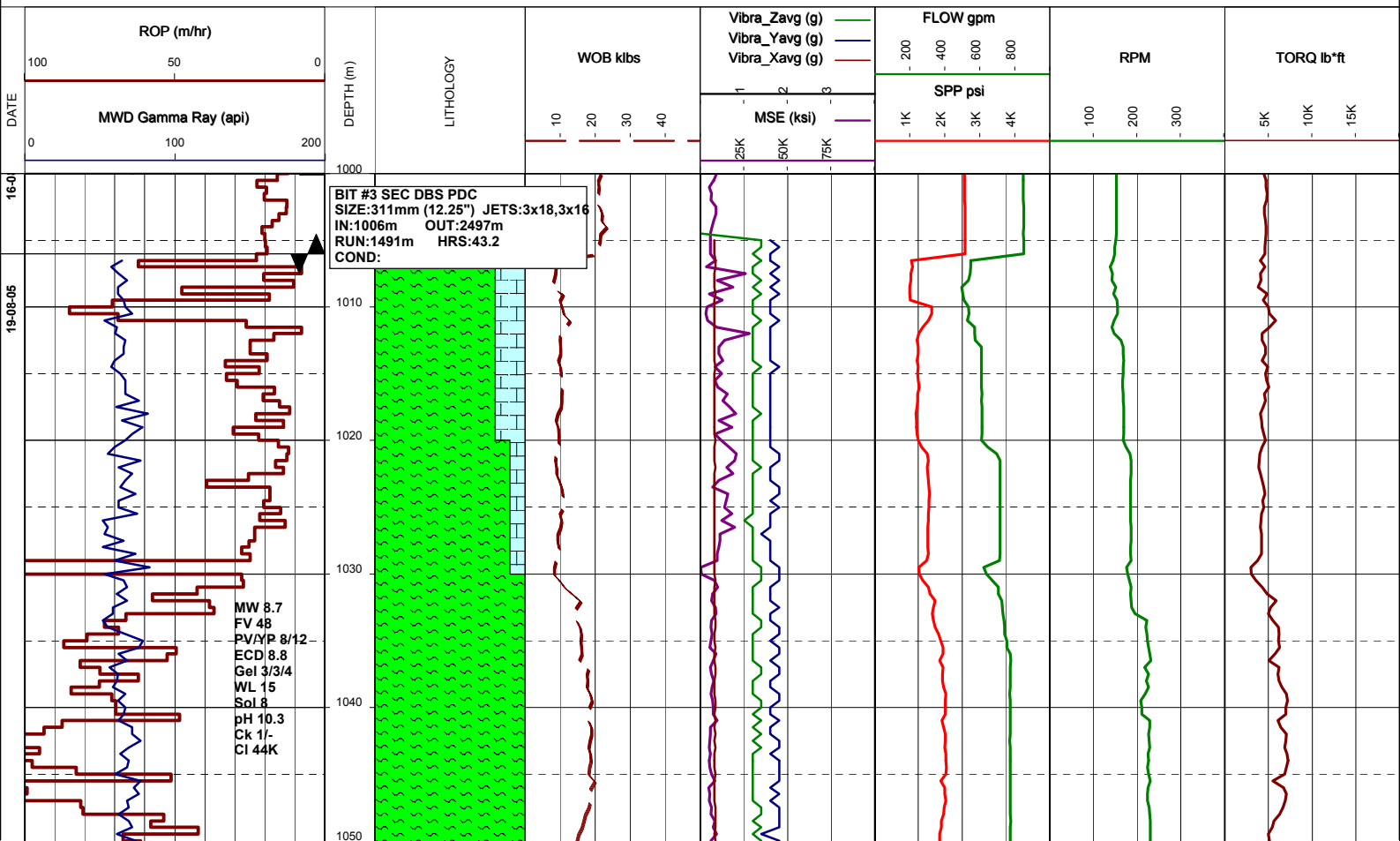
RT-MSL (m) : 21.5

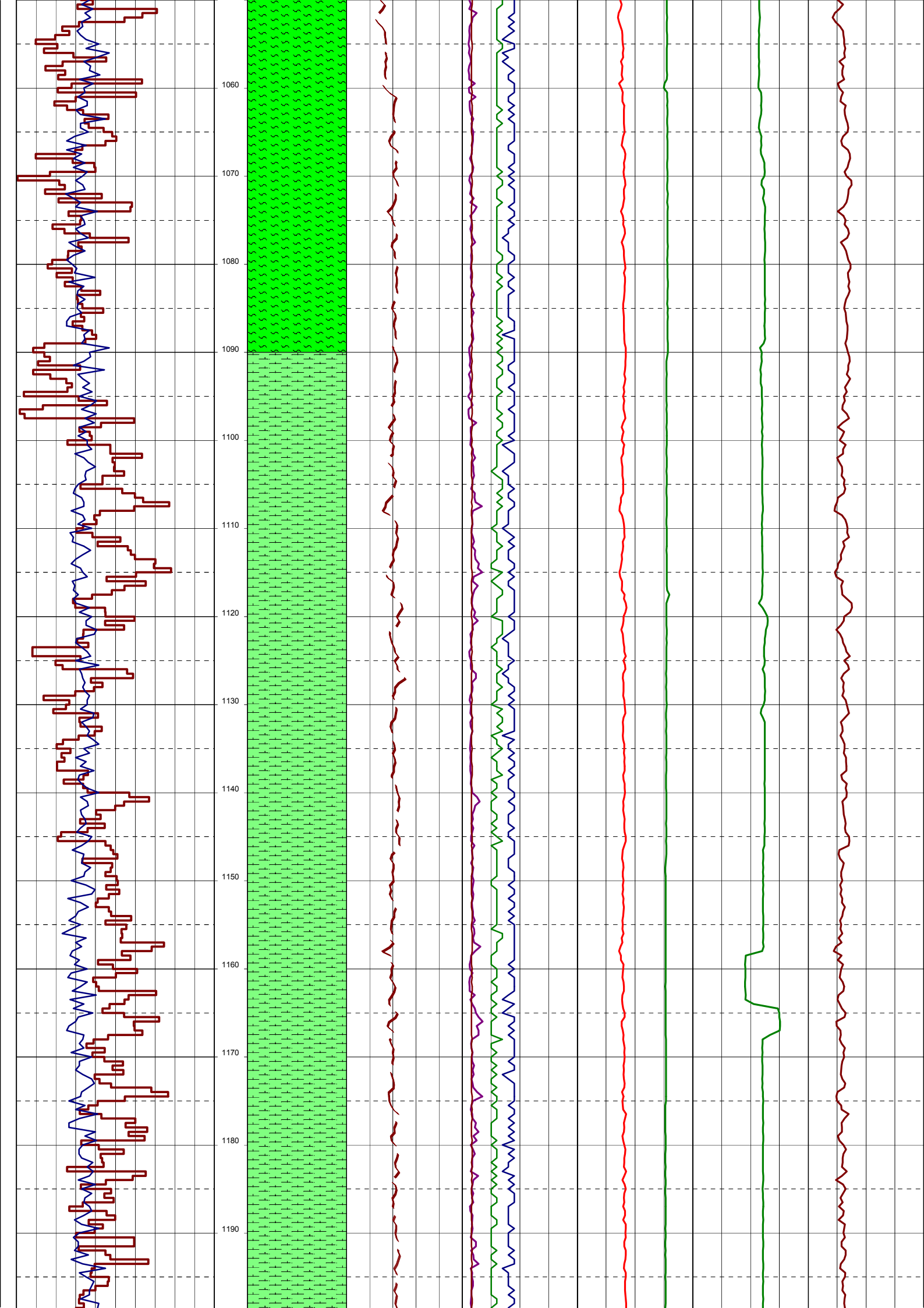
RT-SEABED (m) : 174

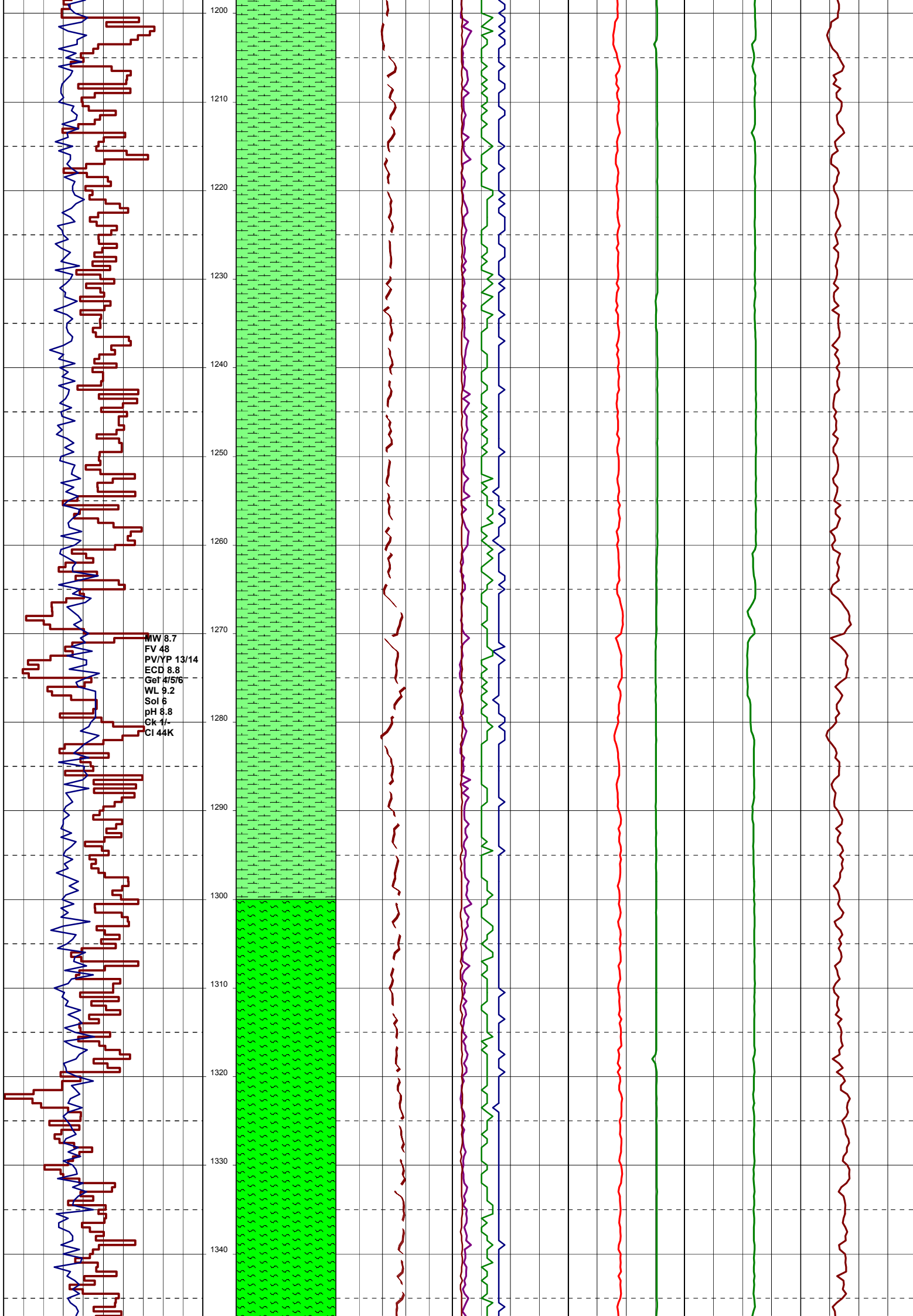
Final TD (mMDRT):

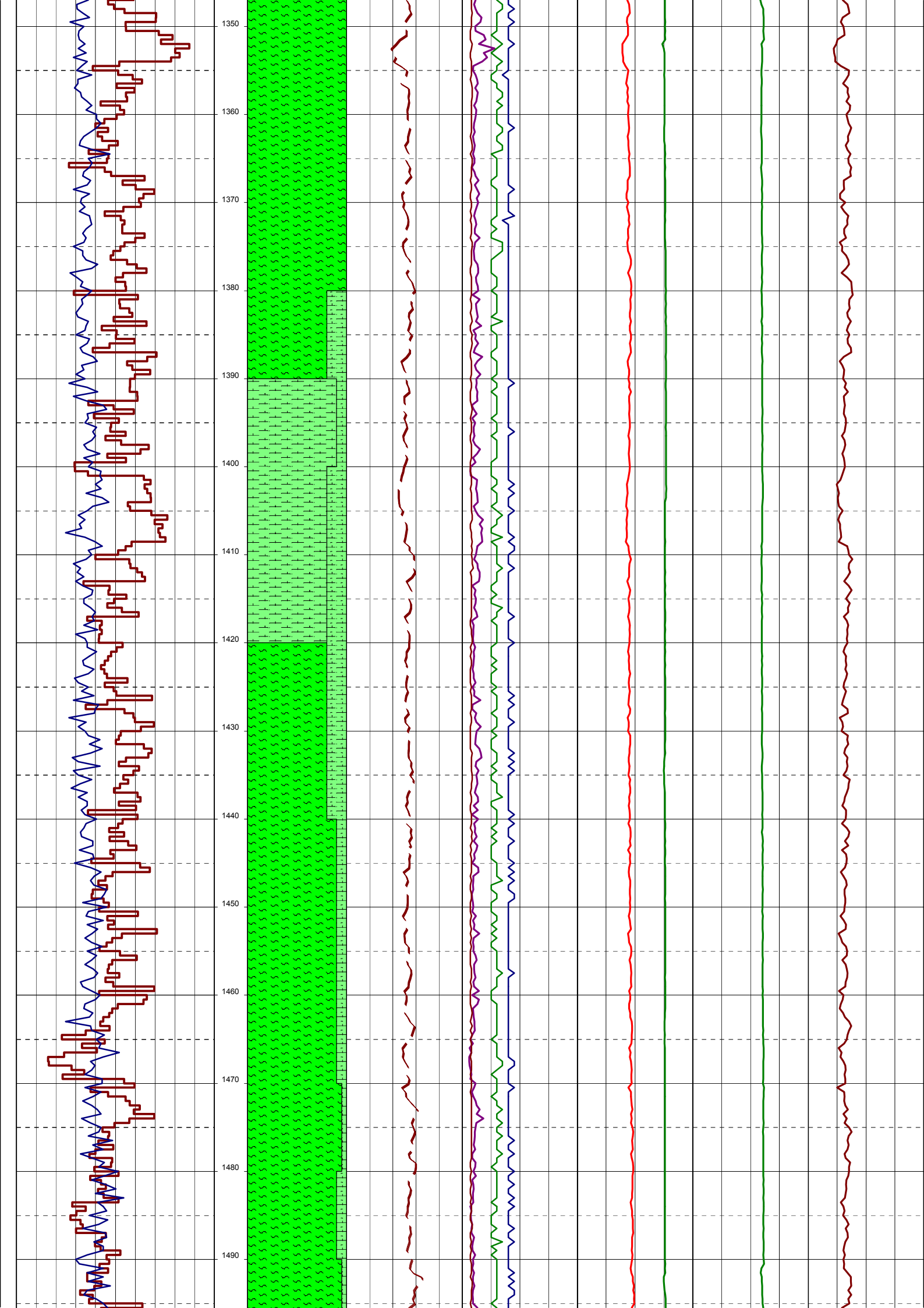
Final TVD (m TVDSS):

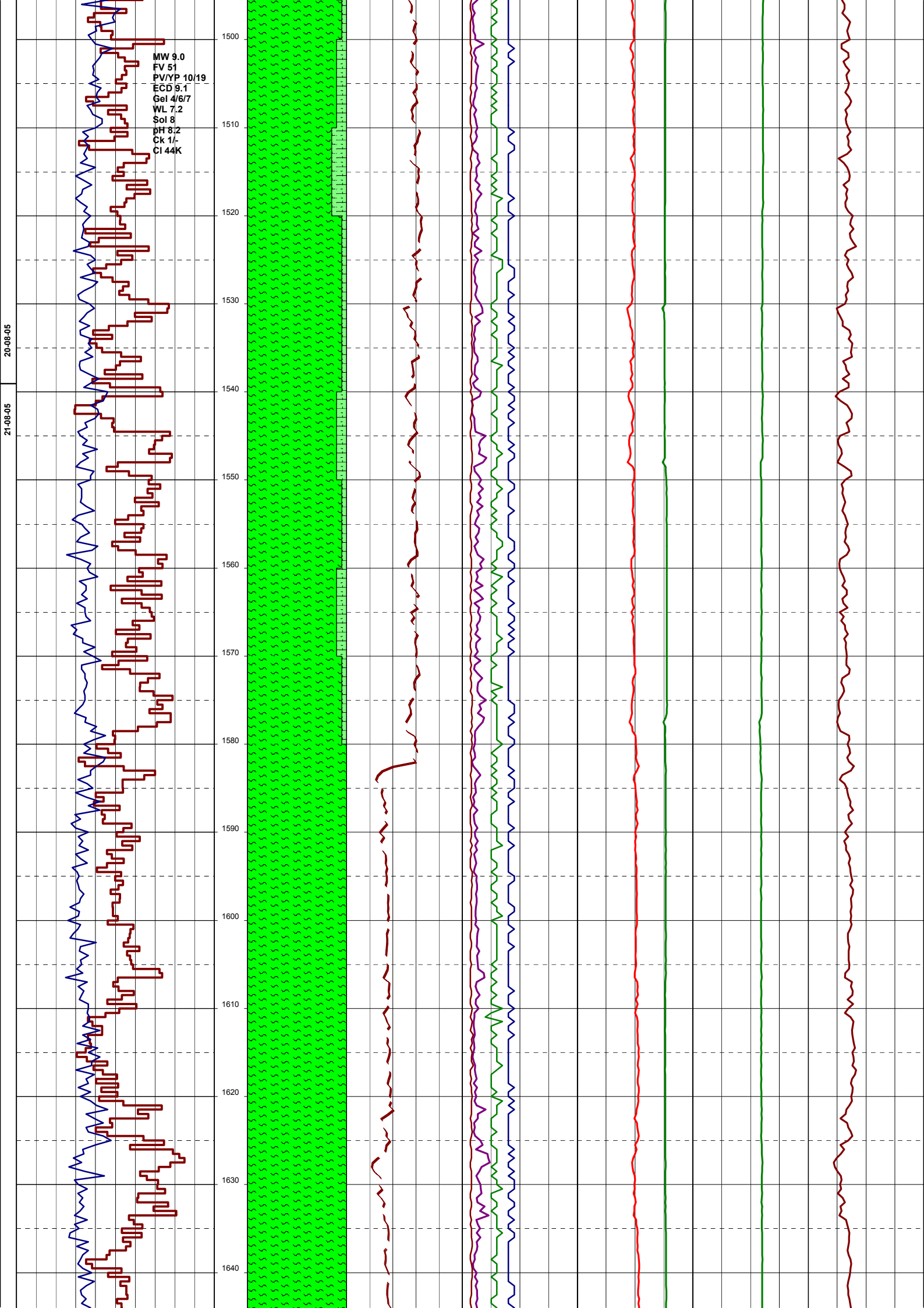
Generated by ALS Package









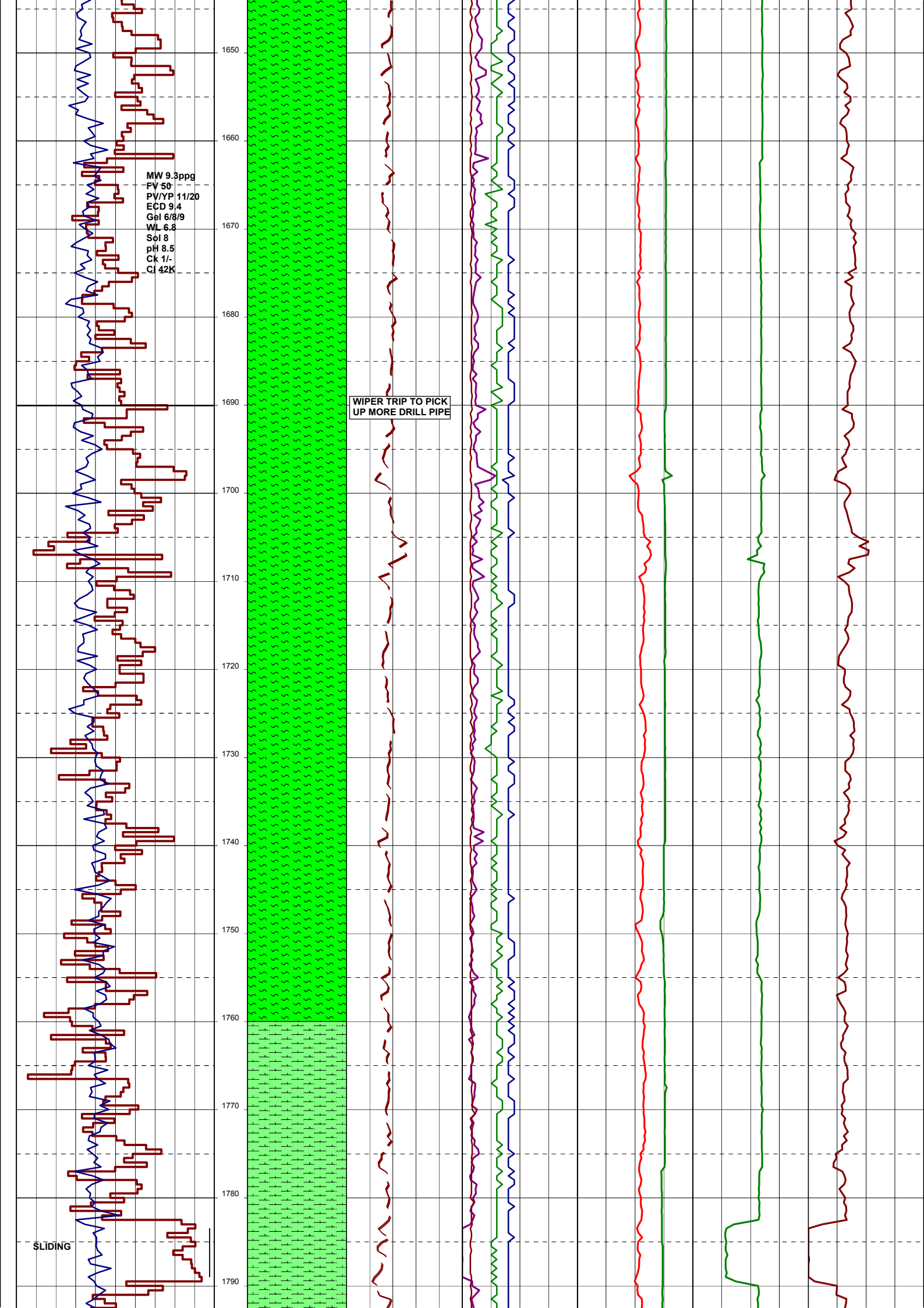


MW 9.3ppg  
FV 50  
PV/YP 11/20  
ECD 9.4  
Gel 6/8/9  
WL 6.8  
Sol 8  
pH 8.5  
Ck 1/-  
Cl 42K

WIPER TRIP TO PICK  
UP MORE DRILL PIPE

SLIDING

1650  
1660  
1670  
1680  
1690  
1700  
1710  
1720  
1730  
1740  
1750  
1760  
1770  
1780  
1790



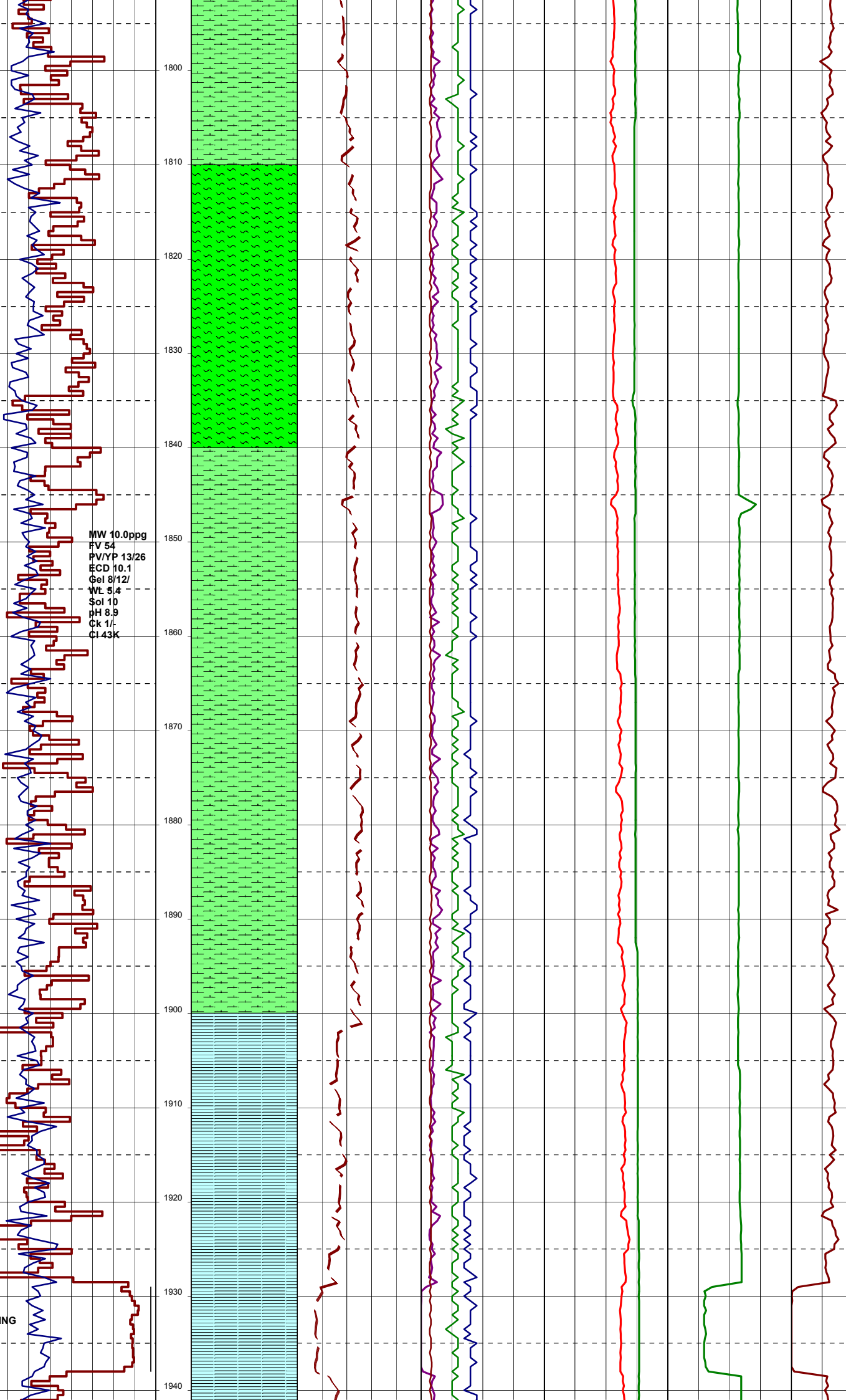
21-08-05

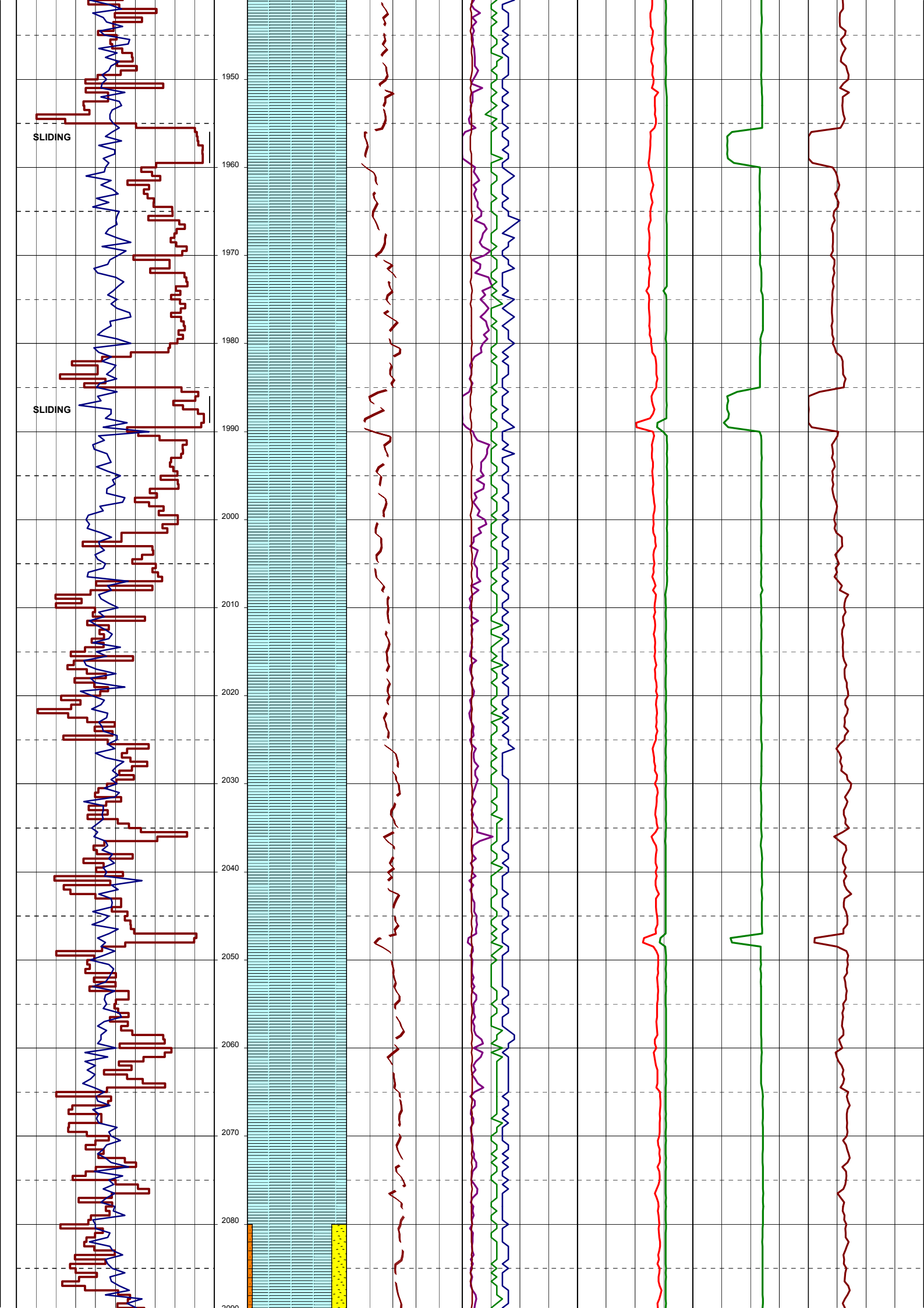
22-08-05

1800  
1810  
1820  
1830  
1840  
1850  
1860  
1870  
1880  
1890  
1900  
1910  
1920  
1930  
1940

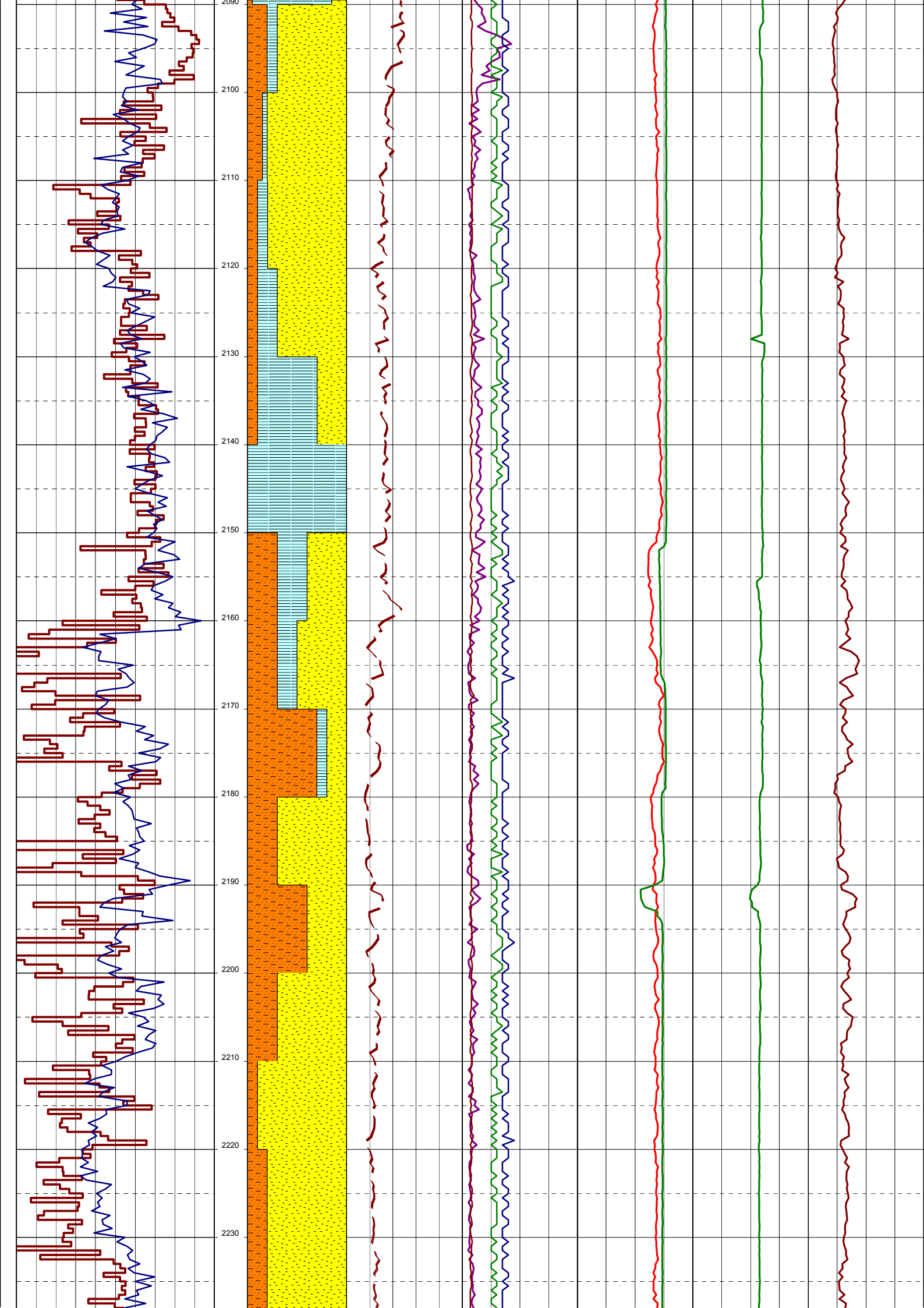
MW 10.0ppg  
FV 54  
PV/YP 13/26  
ECD 10.1  
Gel 8/12/  
WL 5.4  
Sol 10  
pH 8.9  
Ck 1/-  
Cl 43K

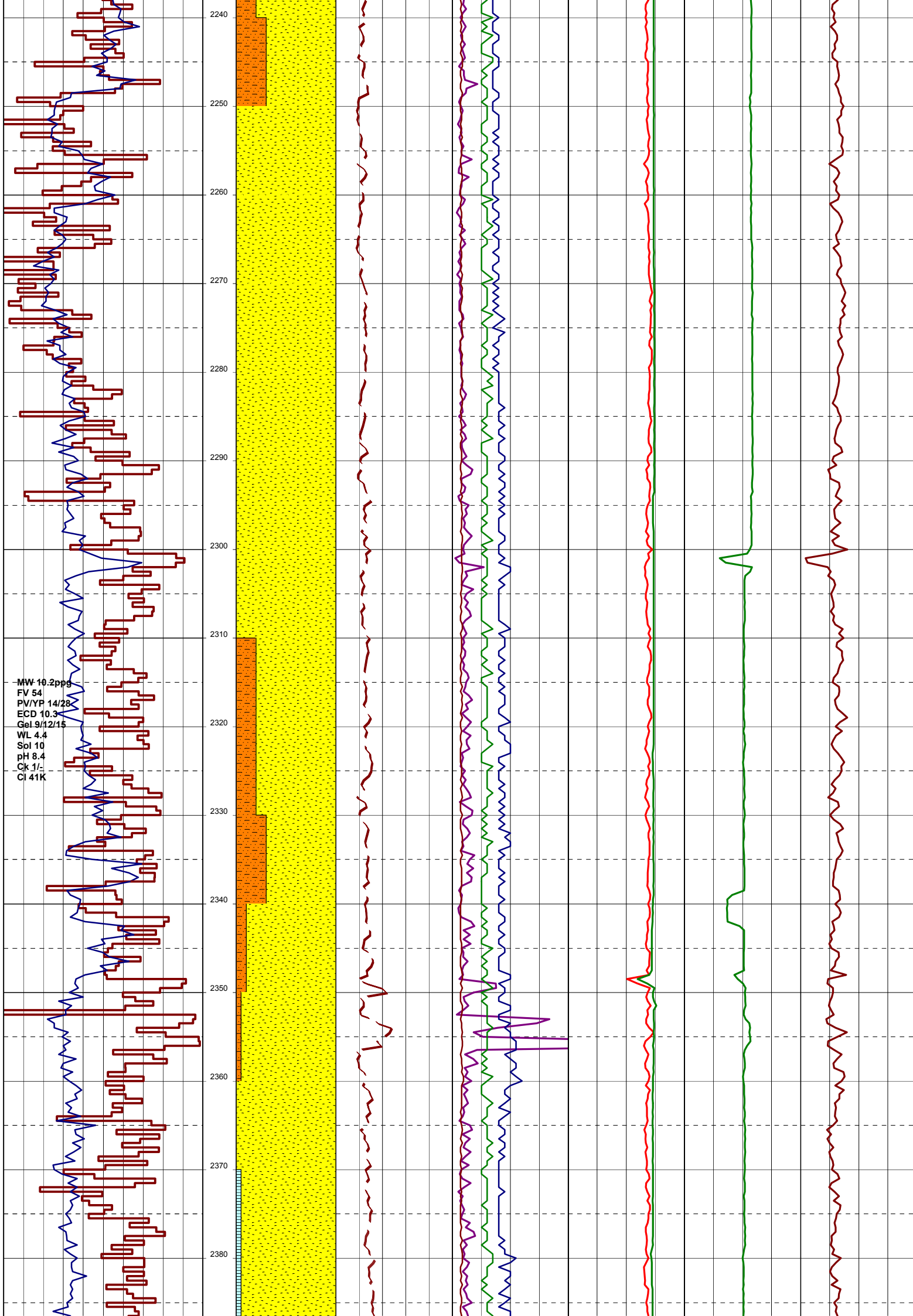
SLIDING

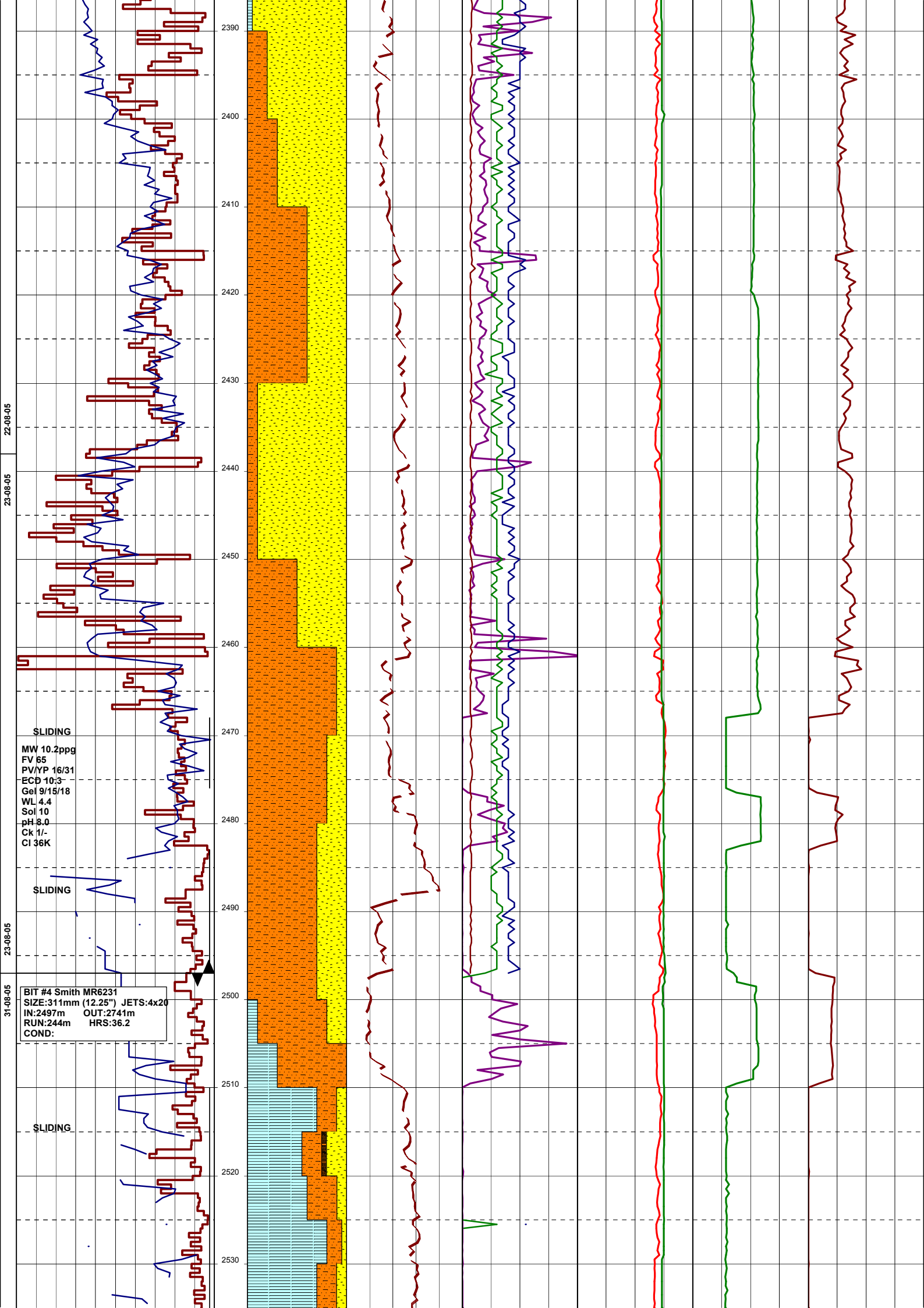












2390  
2400  
2410  
2420  
2430  
2440  
2450  
2460  
2470  
2480  
2490  
2500  
2510  
2520  
2530

22-08-05

23-08-05

23-08-05

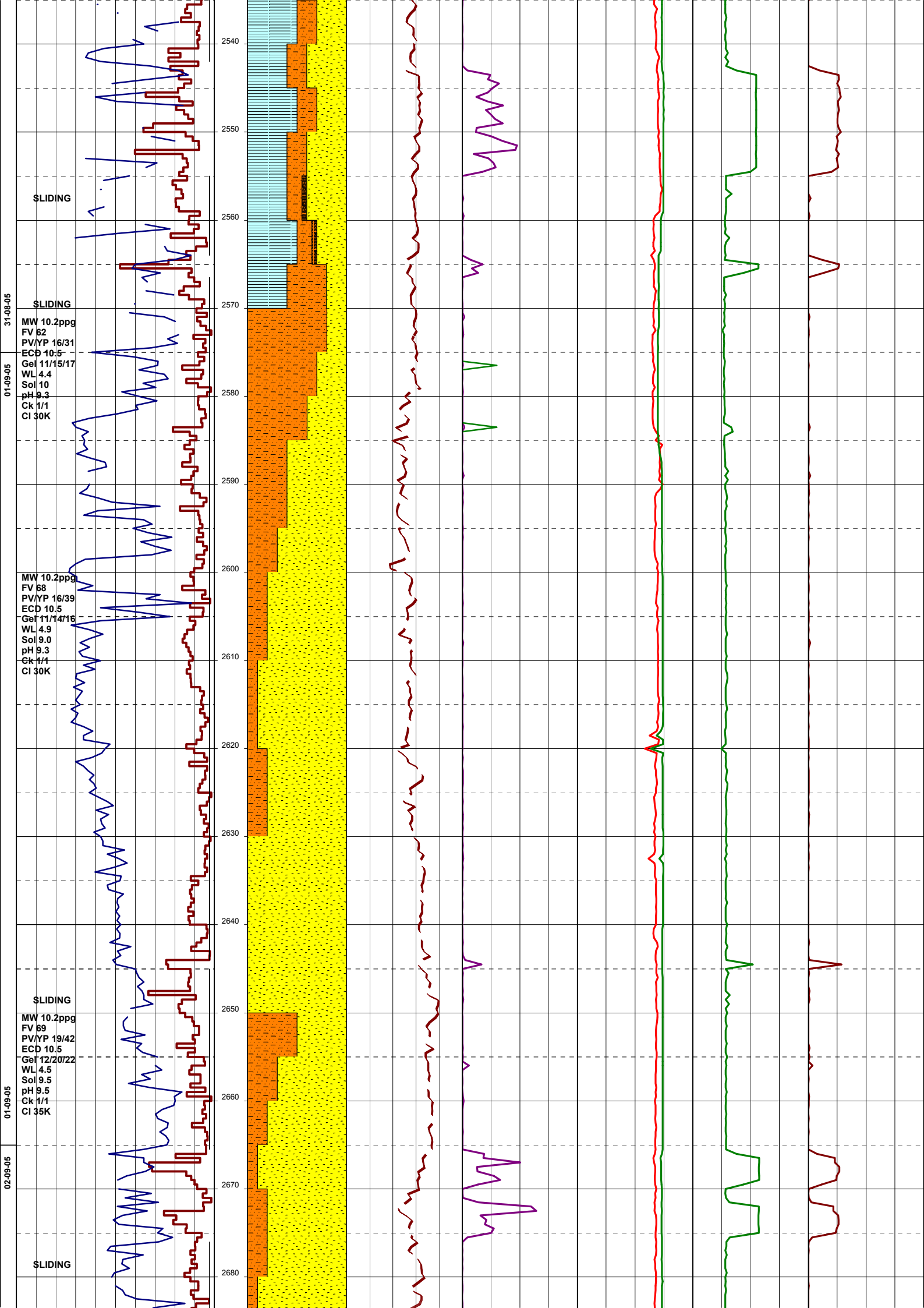
31-08-05

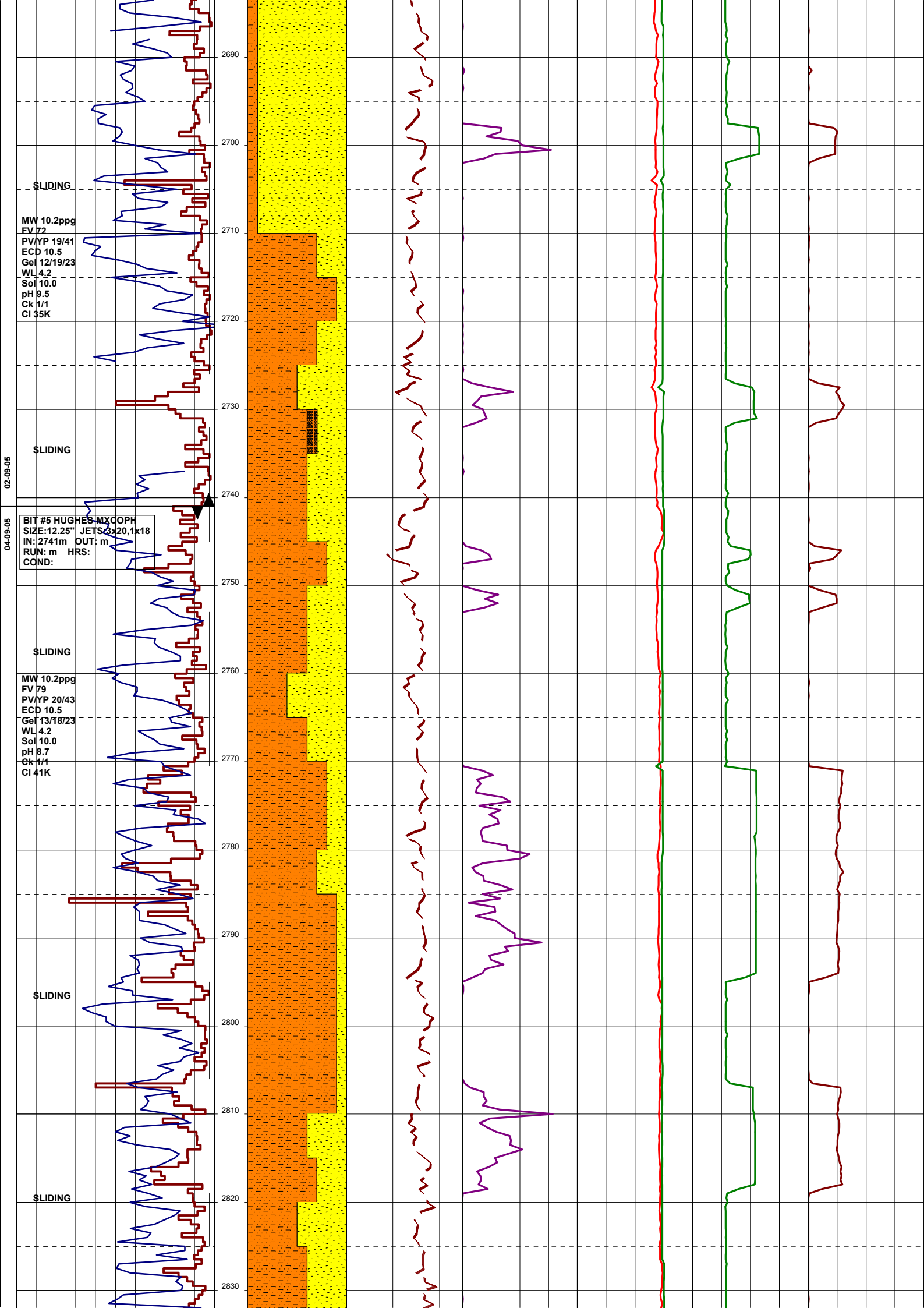
SLIDING  
MW 10.2ppg  
FV 65  
PV/YP 16/31  
ECD 10:3  
Gel 9/15/18  
WL 4.4  
Sol 10  
pH 8.0  
Ck 1/-  
CI 36K

SLIDING

BIT #4 Smith MR6231  
SIZE:311mm (12.25") JETS:4x20  
IN:2497m OUT:2741m  
RUN:244m HRS:36.2  
COND:

SLIDING





2690  
2700  
2710  
2720  
2730  
2740  
2750  
2760  
2770  
2780  
2790  
2800  
2810  
2820  
2830

SLIDING

MW 10.2ppg  
FV 72  
PV/YP 19/41  
ECD 10.5  
Gel 12/19/23  
WL 4.2  
Sol 10.0  
pH 9.5  
Ck 1/1  
CI 35K

SLIDING

BIT #5 HUGHES MXCOPH  
SIZE:12.25" JETS:3x20.1x18  
IN:2744m OUT:m  
RUN: m HRS:  
COND:

SLIDING

MW 10.2ppg  
FV 79  
PV/YP 20/43  
ECD 10.5  
Gel 13/18/23  
WL 4.2  
Sol 10.0  
pH 8.7  
Ck 1/1  
CI 41K

SLIDING

SLIDING

